

# BLEND

FEDERICO PERI



**Struttura:** struttura in multistrato di betulla e MDF rivestita in pelle. Vano a giorno realizzato in materiale a scelta. Interno in rovere spazzolato tinto in diverse tonalità.

**Decoro:** dettagli e maniglia in materiale a scelta.

**Cassa in legno dotata di due sensori per verifica di eventuali danni durante il trasporto.**  
(Fare riferimento a "Avvertenze importanti").

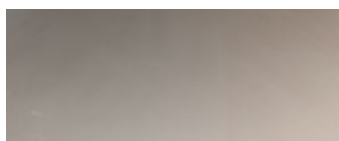
---

**Frame:** frame in birch plywood and MDF leather-covered. Open compartment in material by choice. Interior in brushed oak stained in different tone.

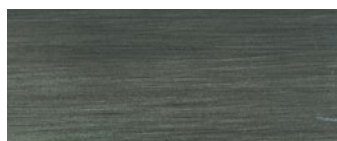
**Decoration:** details and handle in material by choice.

**Wooden crate equipped with two sensors to check for any damage during transport.**  
(Refer to "Important information").

#### FINITURE DISPONIBILI/AVAILABLE FINISHES



acciaio lucido  
glossy steel



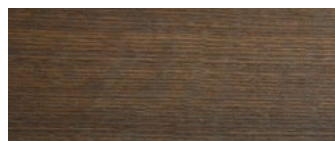
metallo brunito spazzolato a mano  
hand-finished burnished metal



rovere spazzolato Charcoal  
Charcoal brushed oak



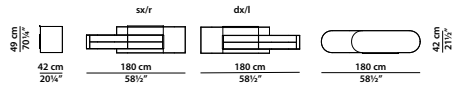
rovere spazzolato Liquorice  
Liquorice brushed oak



rovere spazzolato Tabacco  
Tobacco brushed oak

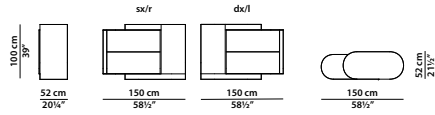
180 x 42 h49 cm - 70¼ x 16½ h19"

Mobile sospeso dx/sx.  
R/l hanging cabinet.



150 x 52 h100 cm - 58½ x 20¼ h39"

Mobile dx/sx. R/l cabinet.



150 x 52 h180 cm - 58½ x 20¼ h19"

Mobile dx/sx. R/l cabinet.

