

LOOM  
HANNES PEER



**Piano:** piano in vetrofusione lavorato con una tecnica particolare per ottenere superfici imperfette.

**Piedi:** base in materiale a scelta e dettagli in ottone satinato. Piedini regolabili.

**Cassa in legno** dotata di due sensori per verifica di eventuali danni durante il trasporto.  
(Fare riferimento a "Avvertenze importanti").

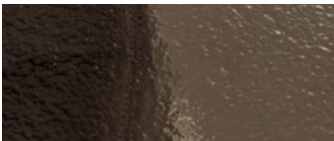
**Top:** fused glass top carried out with a particular technique aimed to obtain imperfect surfaces.

**Feet:** base with material by choice and satin brass details. Adjustable feet.

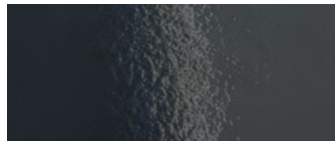
**Wooden crate** equipped with two sensors to check for any damage occurred during transport.  
(Refer to "Important information").

## FINITURE DISPONIBILI/AVAILABLE FINISHES

### PIANO/TOP



vetrofusione bronzo  
bronze colour fused glass



vetrofusione fumo  
smoked colour fused glass

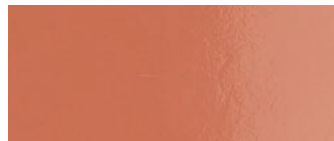
### PIEDI/FEET



metallo brunito spazzolato a mano  
hand-finished burnished metal



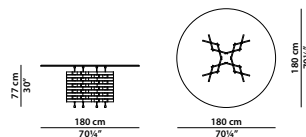
laccato rabarbaro  
rhubarb lacquered



laccato palissandro  
rosewood lacquered

Ø180 h77 cm - Ø70¼ h30"

Tavolo. Table.



250 x 140 h77 cm - 97½ x 54½ h30"

Tavolo. Table.

