

STIG
ROBERTO LAZZERONI



Struttura: struttura in frassino tinto wengè. Struttura seduta e schienale in multistrato di betulla. Dettagli in metallo con finitura a scelta.
Imbottitura: imbottitura in poliuretano espanso a densità differenziata con rivestimento in fibra acrilica.

Disponibile in pelli morbide e montone.

Frame: wengè-stained ash frame. Seat and back frame in birch. Details in metal with finish by choice.

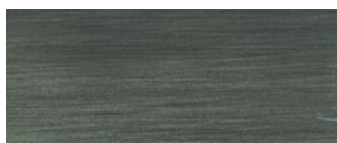
Filling: differentiated density polyurethane foam filling with acrylic fibre covers.

Available in soft leathers and mouton.

FINITURE DISPONIBILI/AVAILABLE FINISHES



metallo ottonato satinato
satin brass-coated metal



metallo brunito spazzolato a mano
hand-finished burnished metal

79 x 75 h75 cm - 30³/₄ x 29¹/₄ h29¹/₄"

Poltrona con cuscino 45x37 incluso.
Armchair with cushion 17¹/₂ x 14¹/₂ included.

